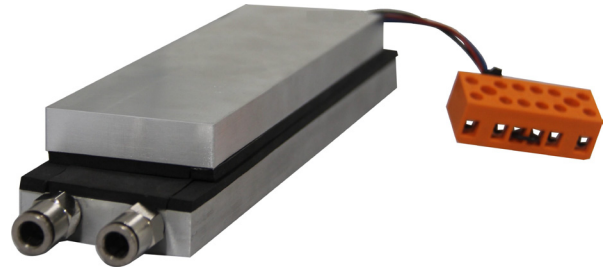


**Plate-to-Liquid Thermoelectric Assembly**

PL-210-24

**Specifications:**

Cooling Power $Q_{cmax}$ (W)	210
Running Current (A)	8.1
Nominal Voltage (V)	24
Max Voltage (V)	27
Power Input (W)	194
Operating Temperature (°C)	-10 to 50
Weight (kg)	1.3
Performance Tolerance	± 10%



**Features**

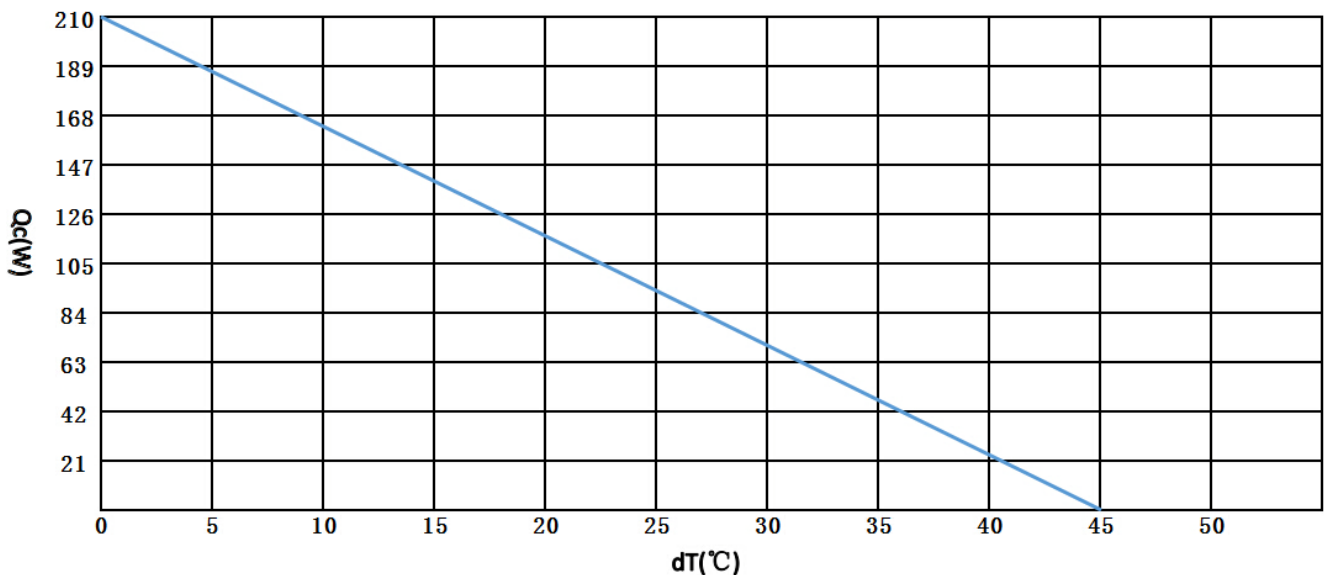
- Compact design
- Precise temperature control
- Reliable solid-state operation
- DC operation
- RoHS compliant

**Applications**

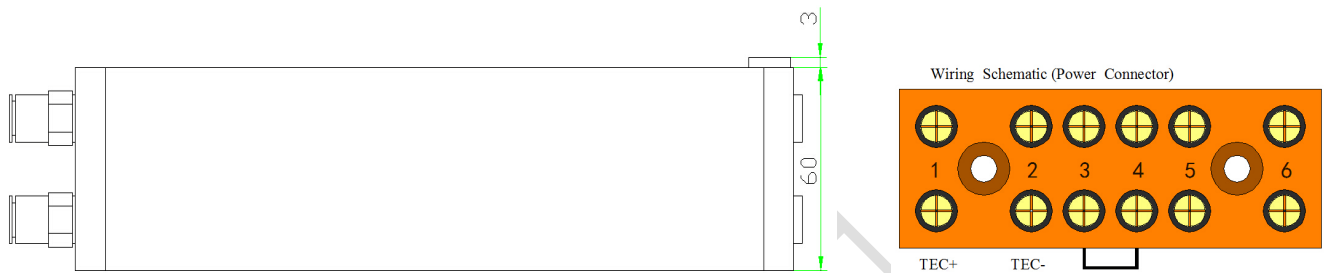
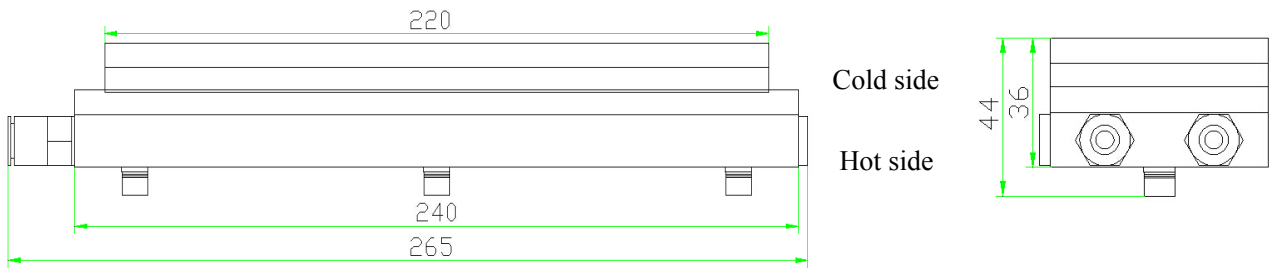
- Analytical instrumentation
- Medical diagnostics
- Photonics laser systems
- Industrial instrumentation
- Food and beverage cooling

All products are manufactured in an ISO 9001:2008 & ISO/TS 16949:2009 certified facility and are designed to meet the cooling needs of many thermal management applications in the medical, analytical, industrial and telecom markets.

**Performance Curve**



Mechanical Drawing



**Notes:**

For indoor use only.

Overheating Thermostat:  $75^{\circ}\text{C} \pm 5^{\circ}\text{C}$  on hot side heat sink surface.

**Address:** 5/F Xinfei Building 28<sup>th</sup> Xiangming Road, Torch (xiang'an) Hi-tech Zone, Xiamen Fujian China.

**Sales Tel:** +86-592-352 1988

**Fax:** +86-592-352 1989

**Postcode:** 361 011

**Web:** [www.pengnantech.com](http://www.pengnantech.com)